

AW609 – Program Overview

IPMA Italy National Congress – Mega Projects Roundtable
Milano, January 24th 2019

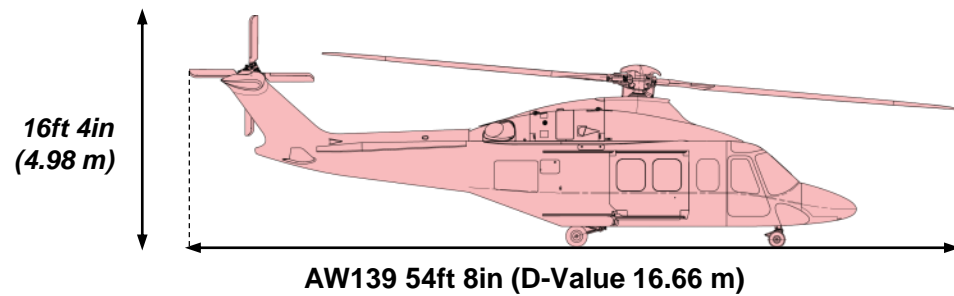
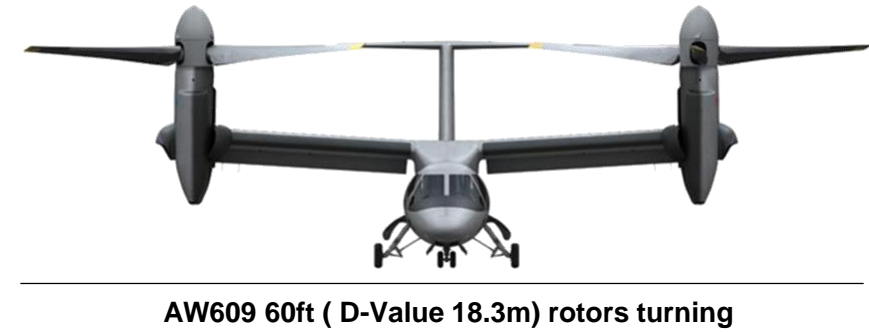


Tiltrotor concept



AW609
TILTROTOR

Size comparison



The AW609 is roughly the same height of other helicopters with a width similar to common turboprop aircraft

AW609 Tiltrotor – Unique versatility

**Acceleration and
Conversion 40 sec**

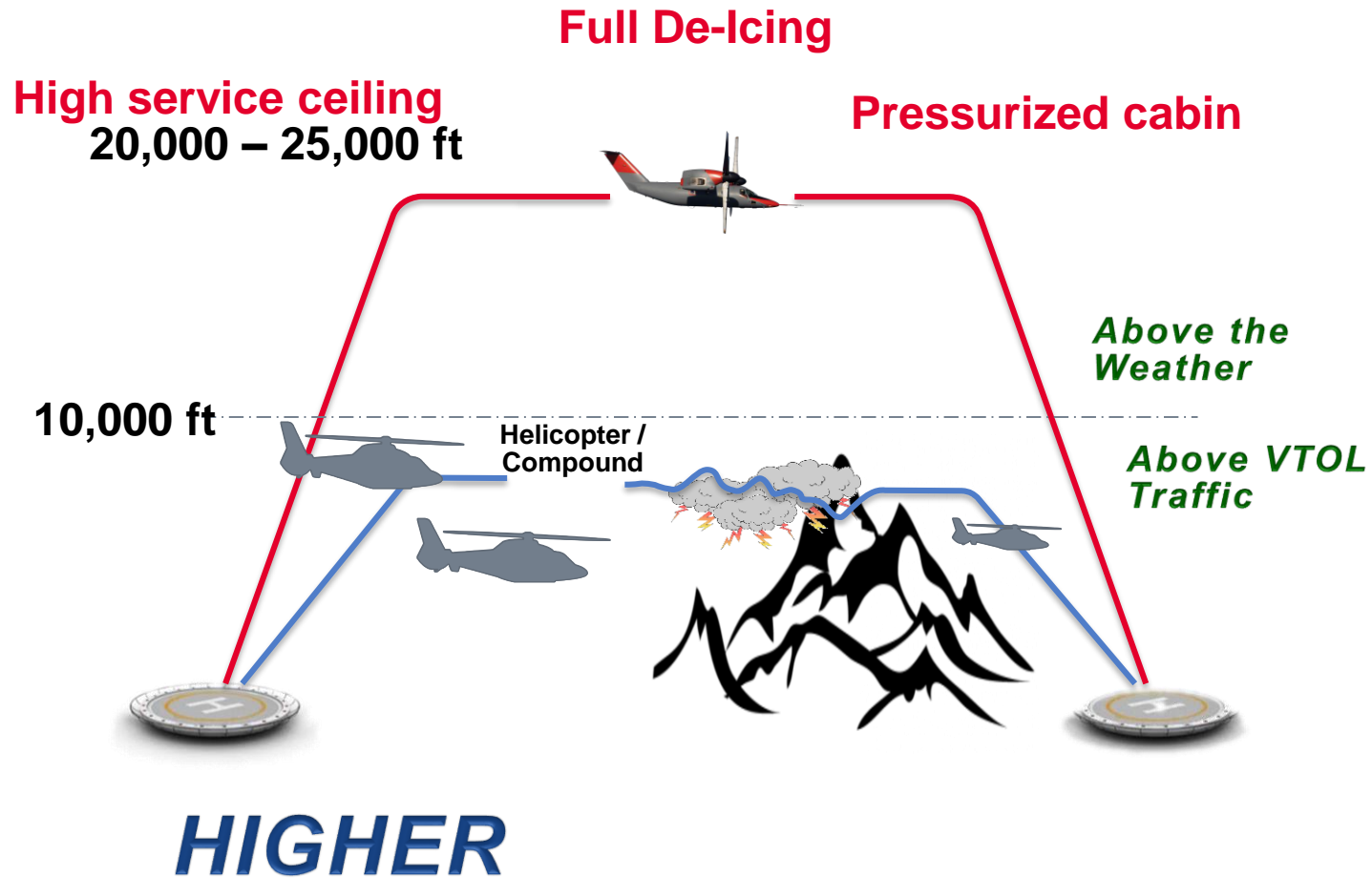


Full Airplane Mode

Vertical Take Off

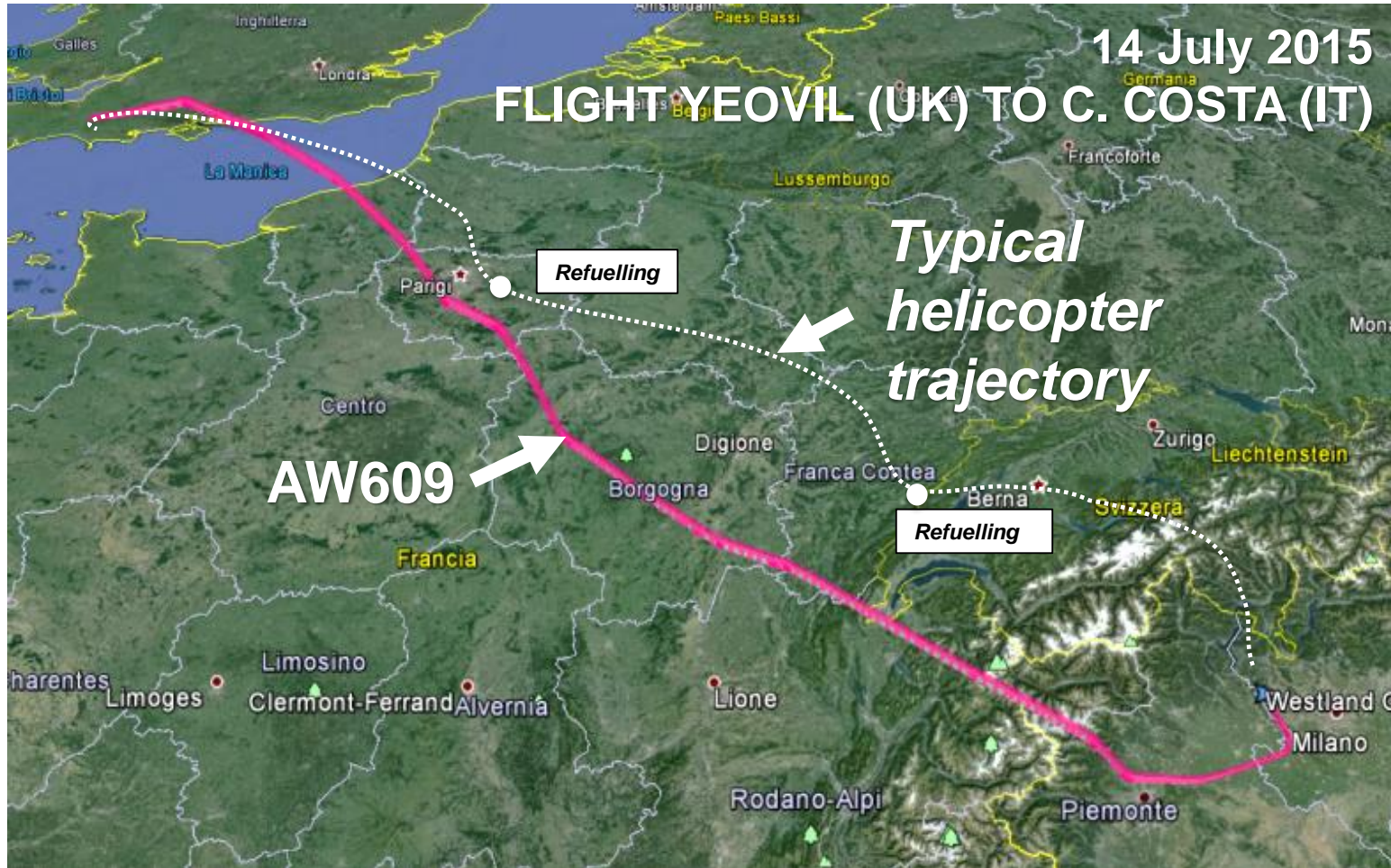


AW609 flies comfortably & safely above the weather



Tiltrotor is a Mobility Enabler

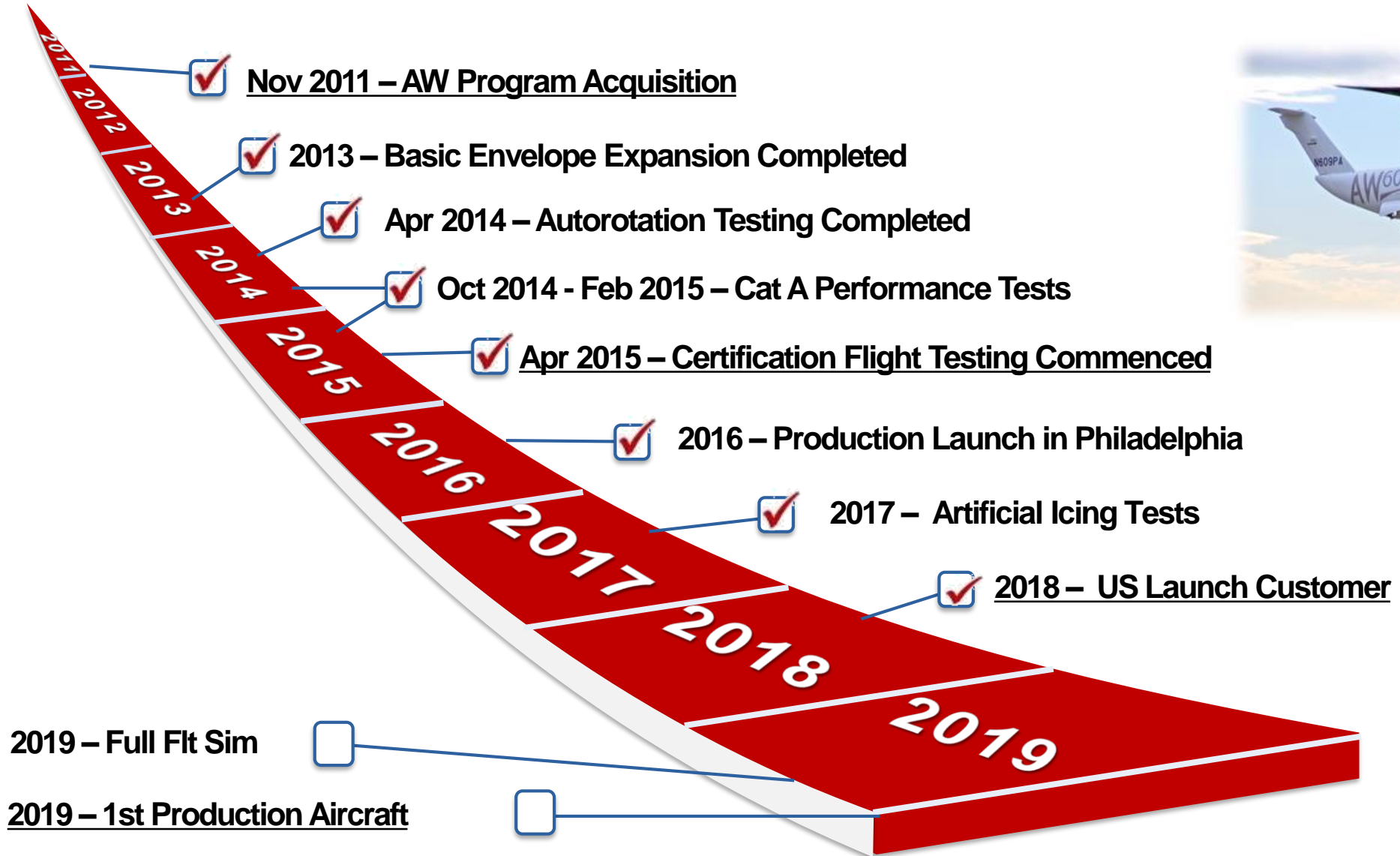
Speed record on a 1,161 km 'point-to-point' journey, covering 627 nm in 2 hrs 18 min



Max Speed: 310 kt (average cruise 280/290 kt)

Max Altitude: 26.430 ft (max PA: 25.000 ft)

Program Milestones



Development Overview

Italy



Philadelphia



2 flying prototypes with more than 1,450 FH...and climbing !



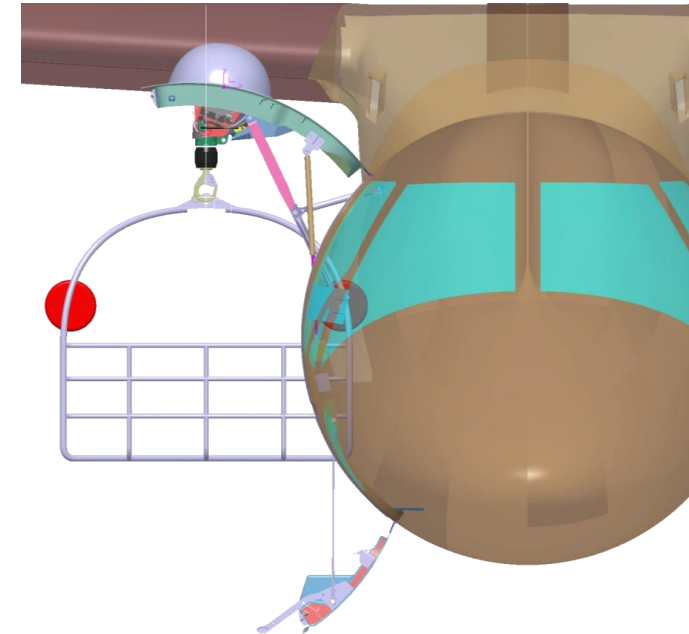
Final Assembly – Philadelphia



Full Scale & Component Testing

Development Activities

- New Avionics
- Engine Upgrade
- Increased Take-Off Weight
- New Main Landing Gear
- Larger Clam-Shell Cabin Door
- Flight Control Computers upgrade
- New Environmental Control System
- Improved Aerodynamics (drag <math>< 10\%</math>)



Looking Forward: The NextGen Tiltrotor



**~15-20 passenger tiltrotor that cruises
at 300+ kts with a >700 nm range !**



THANK **YOU** FOR YOUR ATTENTION

